



Series
1

Series
2

Series
3

Series
4

Series
5

Series
6

the one for every application

BMM WESTON
Sterilizers

series
one
sterilizers



The high performance compact sterilizer that put you one step ahead

Finding the right sterilizer for your application is crucial. Performance, ease of use and reliability are essential for sustaining maximum productivity.

Series 1 sterilizers from bmm weston are designed to deliver. Ideal for a variety of applications with chamber sizes from 180 - 340 litres, they offer ease of operation with colour touch-screen controls and automatic doors. Combining comprehensive functionality with high specification and premium engineering synonymous with BMM Weston. Series 1 is the number one choice for today's demanding sterilizing environments.

Features

The Series 1 range comprises single or double-ended models with 500 x 500mm chamber sections. The range includes models configurable for the following applications:

- Porous Load
- Instruments
- Media
- Sealed & unsealed liquids
- Discard, fluid, plastic & mixed
- Fabrics
- Glassware & plasticware
- Pipette tips
- Free steaming

Configurable cycles

With Series 1, cycles can be configured using discrete cycle stages, with each stage performing a separate function.

Users can also programme parameters to control each function within pre-defined limits and set warnings and fault conditions to parameters if specified limits are exceeded.

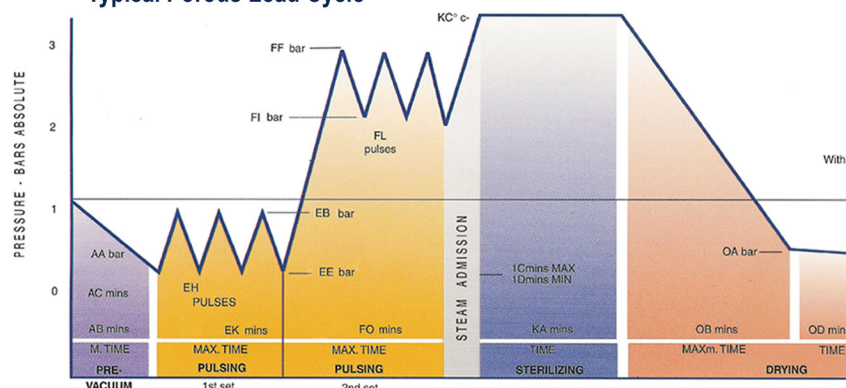
Main features include colour LCD touch-screen systems for easy input and reading of data, automatic sliding doors for fast loading and castors for easy manoeuvring. Various options can also be fitted – please discuss for details.

Loading equipment

BMM Weston can provide various loading equipment solutions to suit your requirements.



Typical Porous Load Cycle



Standard Compliant

As with all BMM Weston sterilizers, Series 1 units are designed and built by the company in the UK to the most stringent requirements. We operate to ISO9001:2008 plus GAMP and our machines comply with all relevant European and British product standards BS3970, PD5500 and NHS guidelines including C14, HTM 2010 and EN285



Control & quality All-in-one

Large 10.4" touch sensitive colour LCD

Capable of showing cycle data display including time, temperatures, pressure, stages and fault messages.

Screen save option when sterilizer not in use.

Special menus available for:

- Supervisor
- Maintenance
- Validation
- Cycle log store
- Machine configuration



Control panel

The ergonomically designed Series 1 control panel incorporates the following user-friendly controls and functions:

- 10.4" touch sensitive colour screen
- Thermal printer
- Power on/off
- Door operation
- Door locked indicator
- Stop button
- Reset
- Chamber pressure gauge
- Steam inlet gauge
- Optional IMS (independent monitoring system)

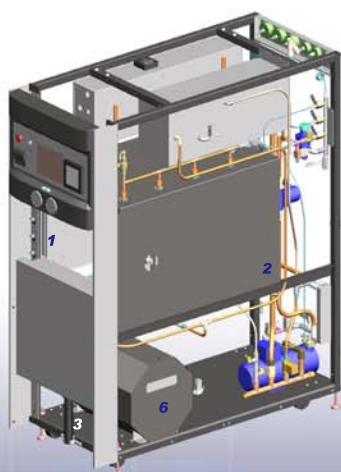
Access codes

All menus, cycle selection and end of cycle authorisations are protected by codes to prevent unauthorised use.

Codes available are:

- Operator
- Senior operator
- Supervisor
- Maintenance

Root



Door sealed by means of floating gasket pressurised from behind to exact a perfect seal.

at the end of each cycle to enable the door to slide easily open and closed.¹

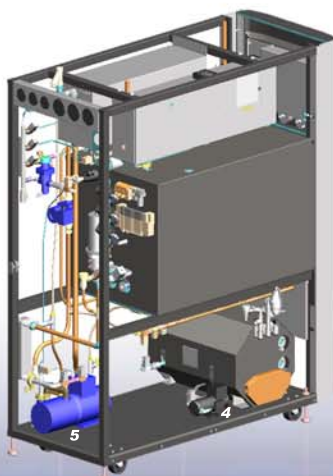
Fully lagged vessel²

Vertical sliding door power operated by means of a pneumatic cylinder

Integrated oil free compressor 100% duty cycle

Water ring vacuum pump

Integral steam generator located under vessel



Key features

Chamber

Rectangular section in 316L stainless steel

Steam Jacket

For improved drying and heat retention

Water Jacket Cooling System

To accelerate cooling

Insulation

For maximum energy conservation

Automatic Powered Door

Pneumatic, vertical sliding

Pressurised Door Seal

Pressure operate floating gasket for a perfect seal

Visual Display Unit

A large 10.4" TFT colour touch screen

Multiple Cycles

Up to 20 configurable cycles

Access Codes

Menus protected for authorised personnel

Data Log Store

Internal memory storage

Printer

Thermal printer

Pneumatic Valves

Delivering improved reliability and performance

Load Probe

Provides optional control of sterilizing stage

Water Conservation

Water is recirculated at temperature to reduce water usage

Water Discharge Control

Ensuring discharge is kept below 80°C

Panelling

Stainless steel fascia panels and Access doors are available.

Leak Rate Test

Standard and Time Set programs



Model	106	108	110	108D	110D	106I	108I	110I	108DI	110DI
Chamber Size (mm)	500x500x750	500x500x985	500x500x1220	500x500x1135	500x500x1370	500x500x750	500x500x985	500x500x1220	500x500x1135	500x500x1370
Volume (Ltr)	180	240	300	280	340	180	240	300	280	340
Single Ended	●	●	●			●	●	●		
Double Ended				●	●				●	●
Barrier Seal Available				●	●				●	●
Integral Steam						●	●	●	●	●
Steam Requirement	3.5 - 4.5 Bar					N/A				
Installed Load	2 KW 6.0A @ 400V 3PH&N 50 Hz					24 KW 42A @ 400V 3PH&N 50 Hz				
Water	1.5 Bar 15mm BSPT Connection									
Treated Water	●	●	●	●	●	●	●	●	●	●
Air 5.8-8.5 Bar	Max flow 6 l/min									
Air Ballasting	30 - 45 l/min									
Drain	35mm									
Safety Valve Outlet	28mm									
Width (mm)	705	705	705	1000	1000	705	705	705	1000	1000
Height (mm)	1905	1905	1905	1905	1905	1905	1905	1905	1905	1905
Depth (mm)	1450	1685	1920	1580	1815	1450	1685	1920	1580	1815

Available models:

Series 1 - 180 to 340 litre capacity
Vertical sliding door, 500x500mm section, Single & double ended

Series 2 - 370 to 670 litre capacity
Horizontal sliding door, 680x680mm section, Single & double ended

Series 3 - 510 to 1370 litre capacity

Series 4 - 1070 to 2320 litre capacity
Horizontal sliding door, 680x1570mm section, Single & double ended

Series 6 – customer specific (example 6682 litre capacity)
Horizontal sliding door, customer specific, Single & double ended



Model: P108DI

contact us
t +44 (0) 1795 597115/533441
e sterilizers@bmmweston.co.uk
bmmweston.com/sterilizers

www.bmmweston.com

BMM Weston Limited
Faversham
Kent ME13 7EB
England

BMM WESTON
Sterilizers